

Coordonatele STEREO 70

ale siturilor arheologice reperate pe teritoriul comunei Girișu de Criș

1. Girișu de Criș – Alceu

Suprafața sitului: 89,83 ha

	X	Y
1	253430.124	621704.514
2	253633.890	621238.501
3	253712.505	621011.447
4	253729.709	620794.351
5	253471.517	620673.276
6	253503.990	620368.961
7	254041.115	620385.027
8	254398.272	620685.418
9	254417.194	620777.663
10	254209.050	621605.512

2. Girișu de Criș – Alceu – Roșia

Suprafața sitului: 30,74 ha

	X	Y
1	255835.545	620662.696
2	255207.038	620584.133
3	254953.218	620306.139
4	255055.955	620179.229
5	255333.948	620257.793
6	255412.512	620366.573
7	255708.635	620257.793
8	256028.932	620275.923

3. Girișu de Criș – Fântâna lui Ivani

Suprafața sitului: 29,59 ha

	X	Y
1	256245.510	621563.264
2	255793.772	621472.124
3	255880.950	620956.984

4	256455.529	621016.423
5	256380.239	621329.469

4. Girişu de Criş – Gherand

Suprafaţa sitului: 36,80 ha

	X	Y
1	252268.565	623600.988
2	252062.716	623109.471
3	252398.796	622996.044
4	253024.745	623458.154
5	252873.509	623630.395

5. Girişu de Criş – fosta grădină CAP

Suprafaţa sitului: 15,73 ha

	X	Y
1	252427.459	622422.879
2	252458.991	622366.383
3	252748.040	622520.104
4	252901.761	622648.862
5	252818.988	622817.036
6	252656.070	622886.670
7	252456.363	622768.423
8	252405.123	622556.892

6. Girişu de Criş – Romon

Suprafaţa sitului: 6,48 ha

	X	Y
1	253590.830	623779.793
2	253309.888	623589.172
3	253384.981	623451.064
4	253724.212	623620.680

7. Girişu de Criş – canalul Crişului

Suprafaţa sitului: 16,11 ha

	X	Y
1	253495.258	624016.887
2	253091.961	623983.279
3	253037.348	623752.224
4	253188.584	623575.782
5	253625.489	623882.455

6	253617.087	623979.078
---	------------	------------

8. Girişu de Criş – Râturi

Suprafaţa sitului: 6,77 ha

	X	Y
1	253784.726	624840.346
2	253685.661	624776.944
3	253622.259	624677.879
4	253546.969	624515.412
5	253638.110	624432.197
6	253729.250	624503.524
7	253867.941	624717.505
8	253852.091	624796.757

9. Girişu de Criş – între poduri

Suprafaţa sitului: 3,90 ha

	X	Y
1	254282.945	624487.399
2	254159.016	624470.595
3	254129.609	624394.977
4	254205.227	624271.047
5	254299.749	624279.449
6	254360.664	624308.856
7	254379.568	624386.575
8	254337.558	624439.088

10. Girişu de Criş – Pietroasa

Suprafaţa sitului: 7,15 ha

	X	Y
1	254811.955	624723.441
2	254629.144	624626.748
3	254579.286	624451.491
4	254666.159	624363.863
5	254770.407	624402.389
6	254895.806	624526.278
7	254859.546	624669.807

11. Tărian – Dâmbu lui Ciordaş

Suprafaţa sitului: 7,02 ha

	X	Y
1	255256.003	627623.766
2	255136.670	627618.049
3	255024.484	627412.969
4	255218.845	627327.221
5	255307.451	627350.802
6	255371.762	627430.833
7	255356.756	627531.587

12. Tărian – canalul Crișului

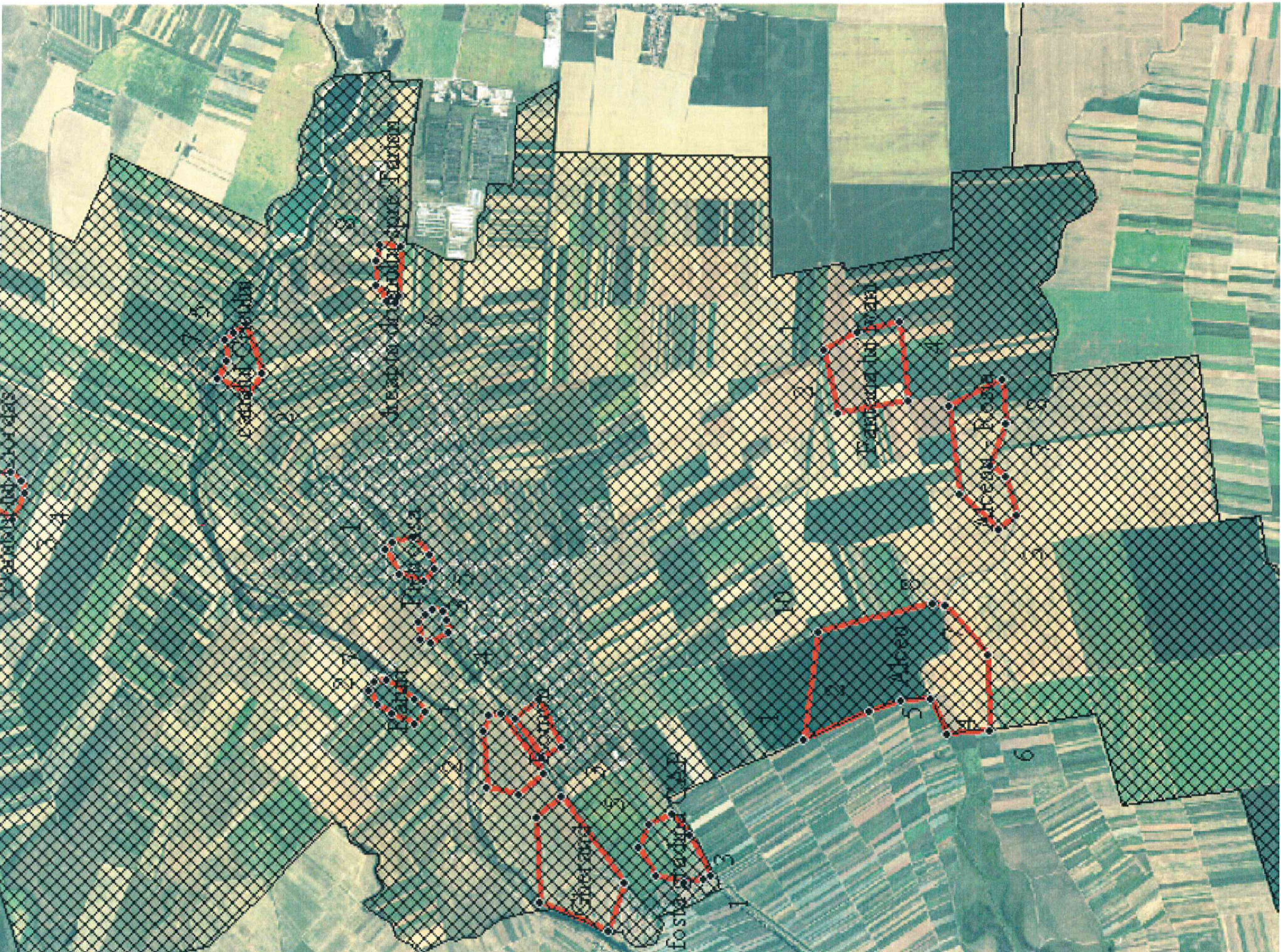
Suprafața sitului: 9,24 ha

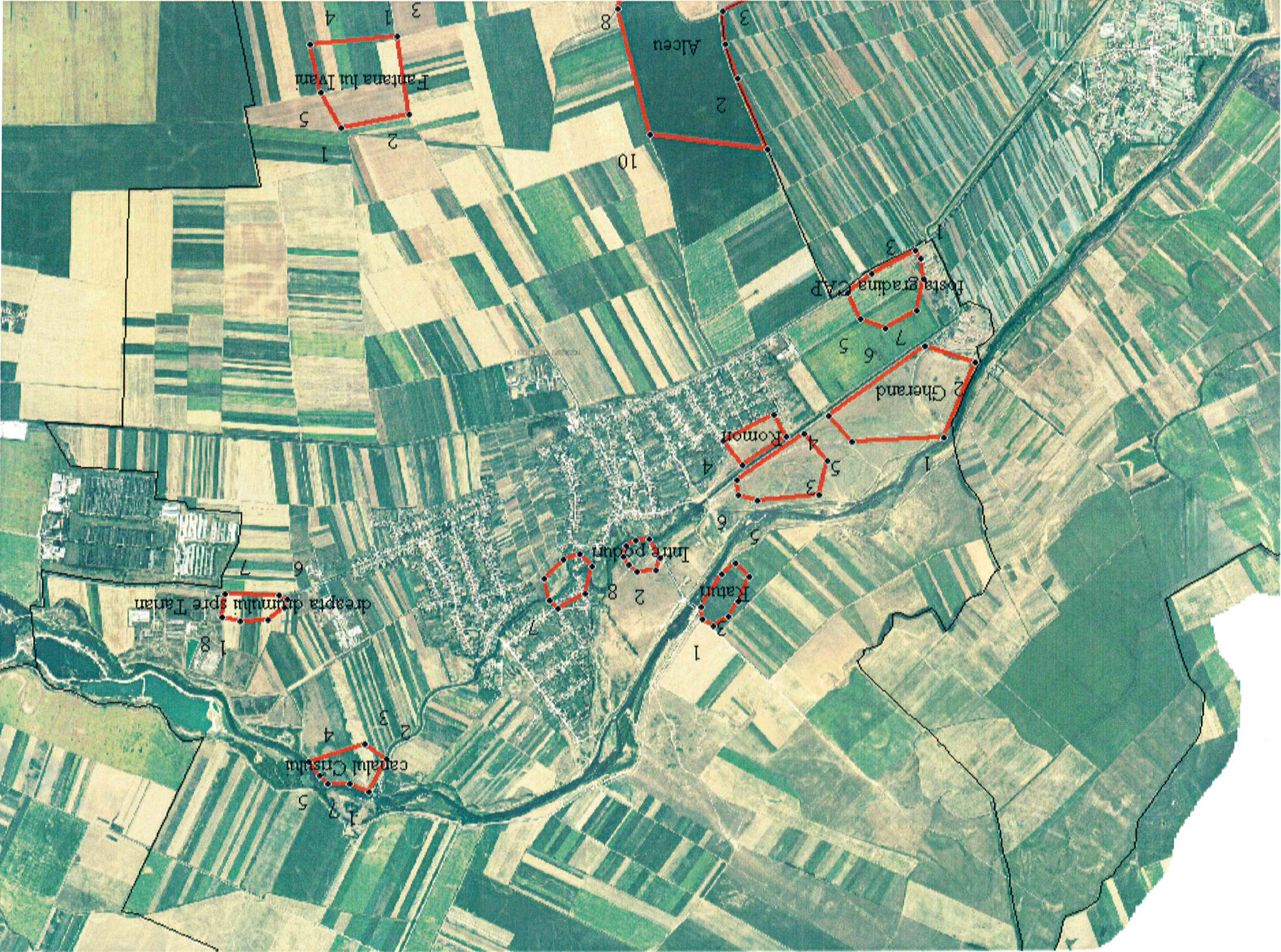
	X	Y
1	256045.879	625931.646
2	255934.201	625712.232
3	256077.411	625620.262
4	256442.664	625735.881
5	256374.343	625825.224
6	256320.475	625880.406
7	256174.637	625876.464

13. Tărian – dreapta drumului Sântandrei – Tărian

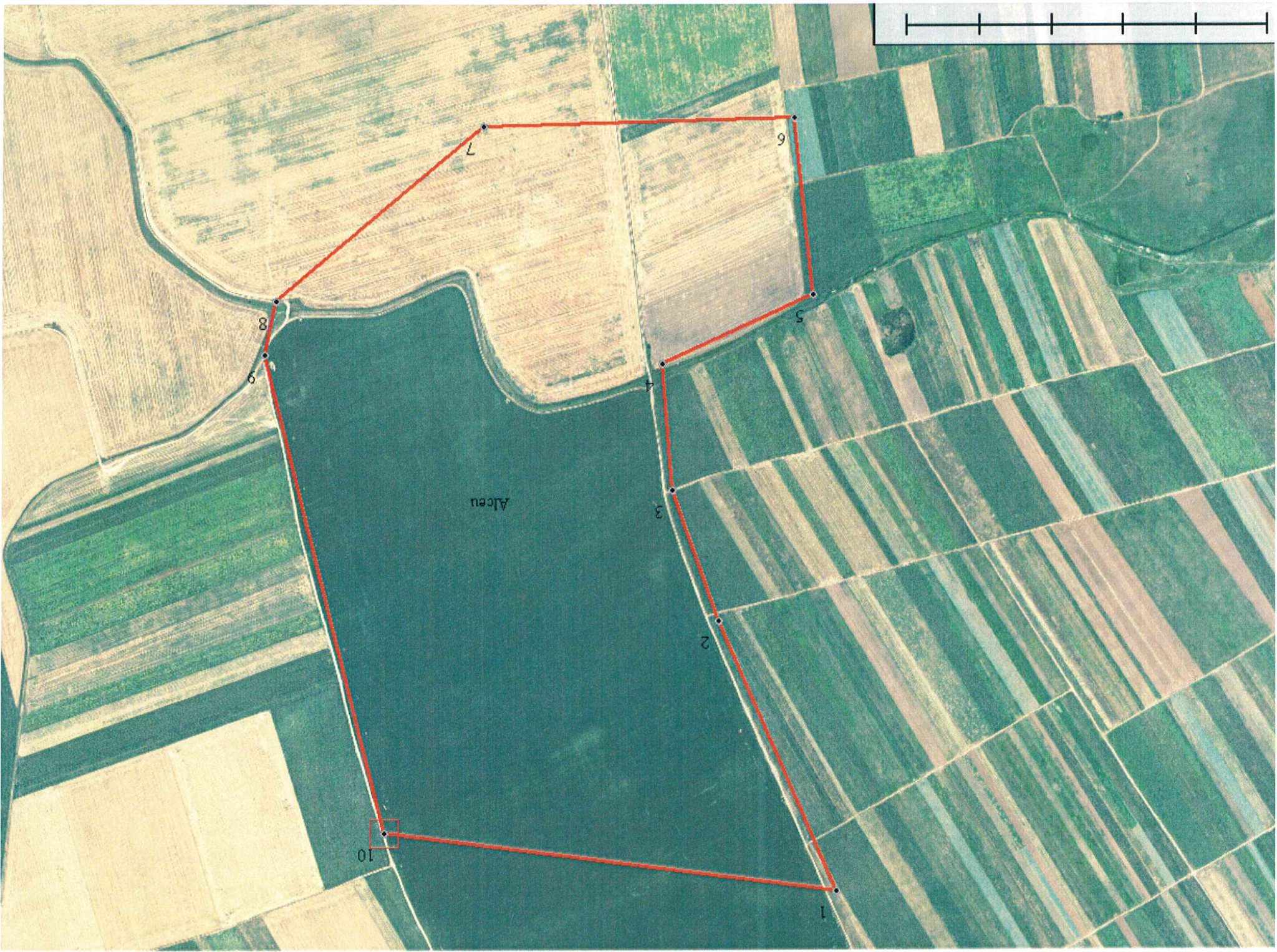
Suprafața sitului: 6,34 ha

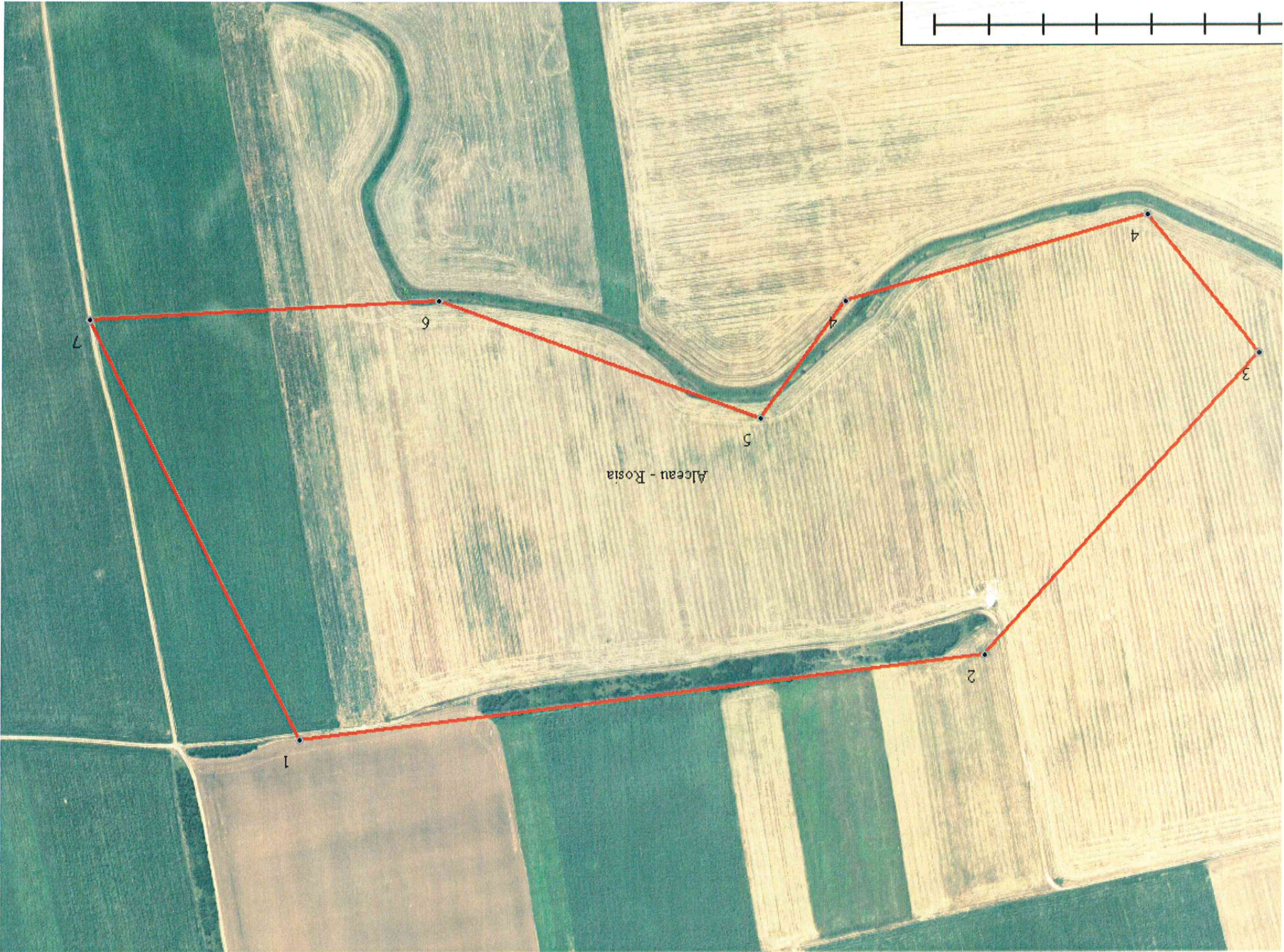
	X	Y
1	256897.463	624806.965
2	256715.129	624796.409
3	256605.729	624721.556
4	256588.455	624659.179
5	256641.236	624634.228
6	256996.307	624623.672
7	257013.581	624776.256

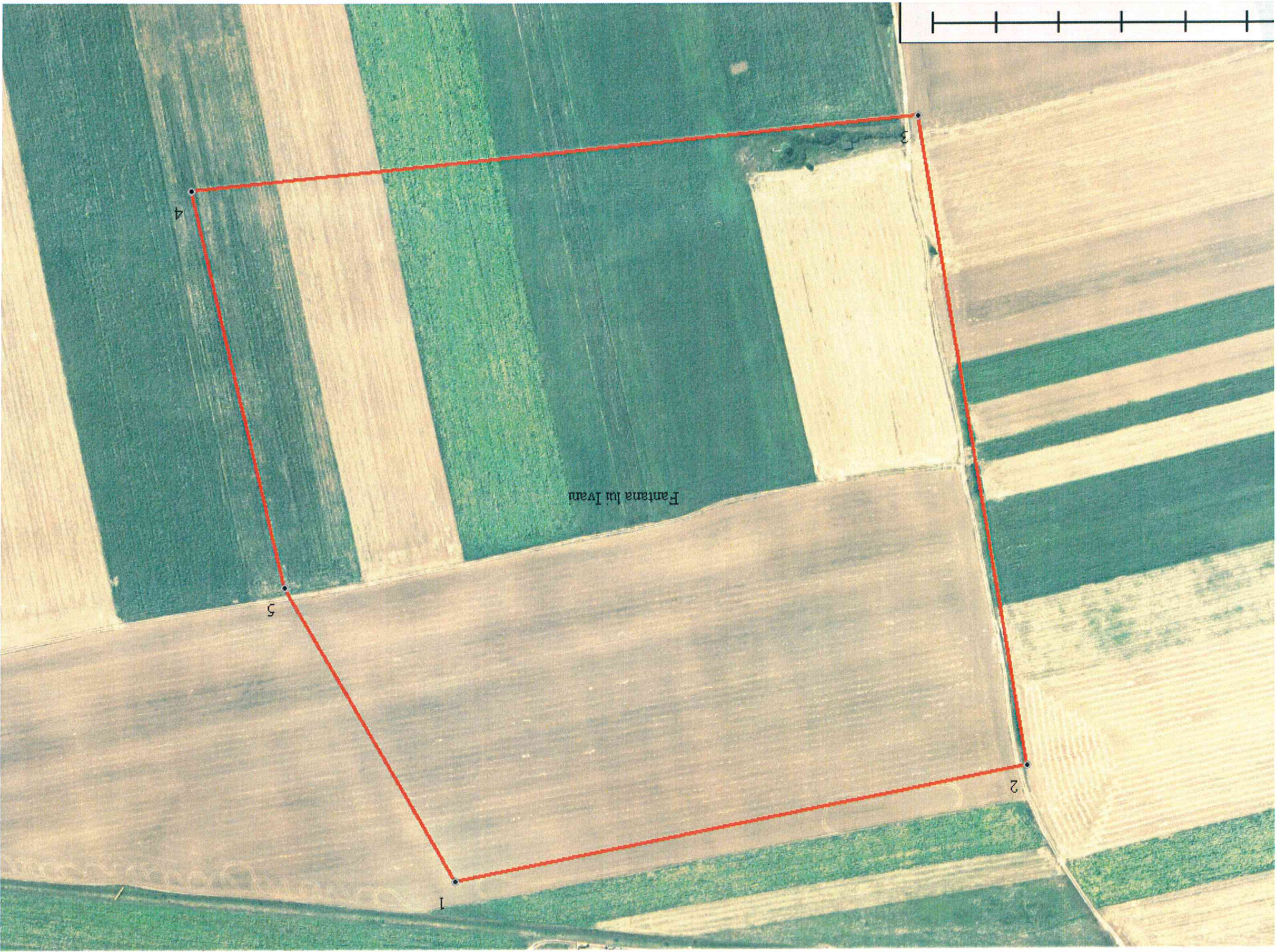




11







Fantana lui Ivan

4

5

1

2

3





fosta gradina CAP



Romon

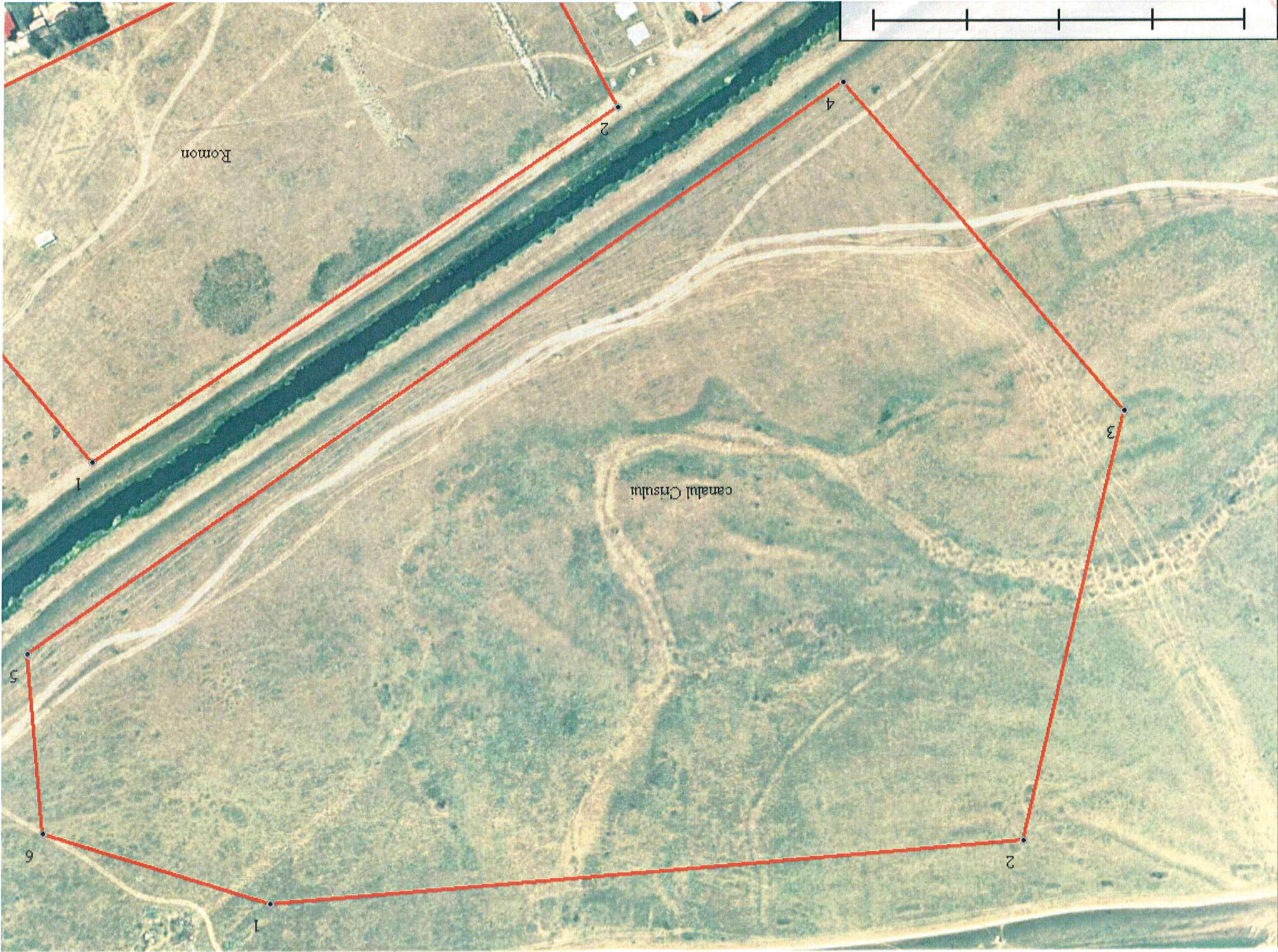
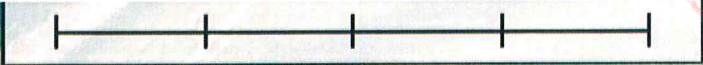
canal / trsum

3

2

4

1



Romon

canalul Crisului

1

2

4

3

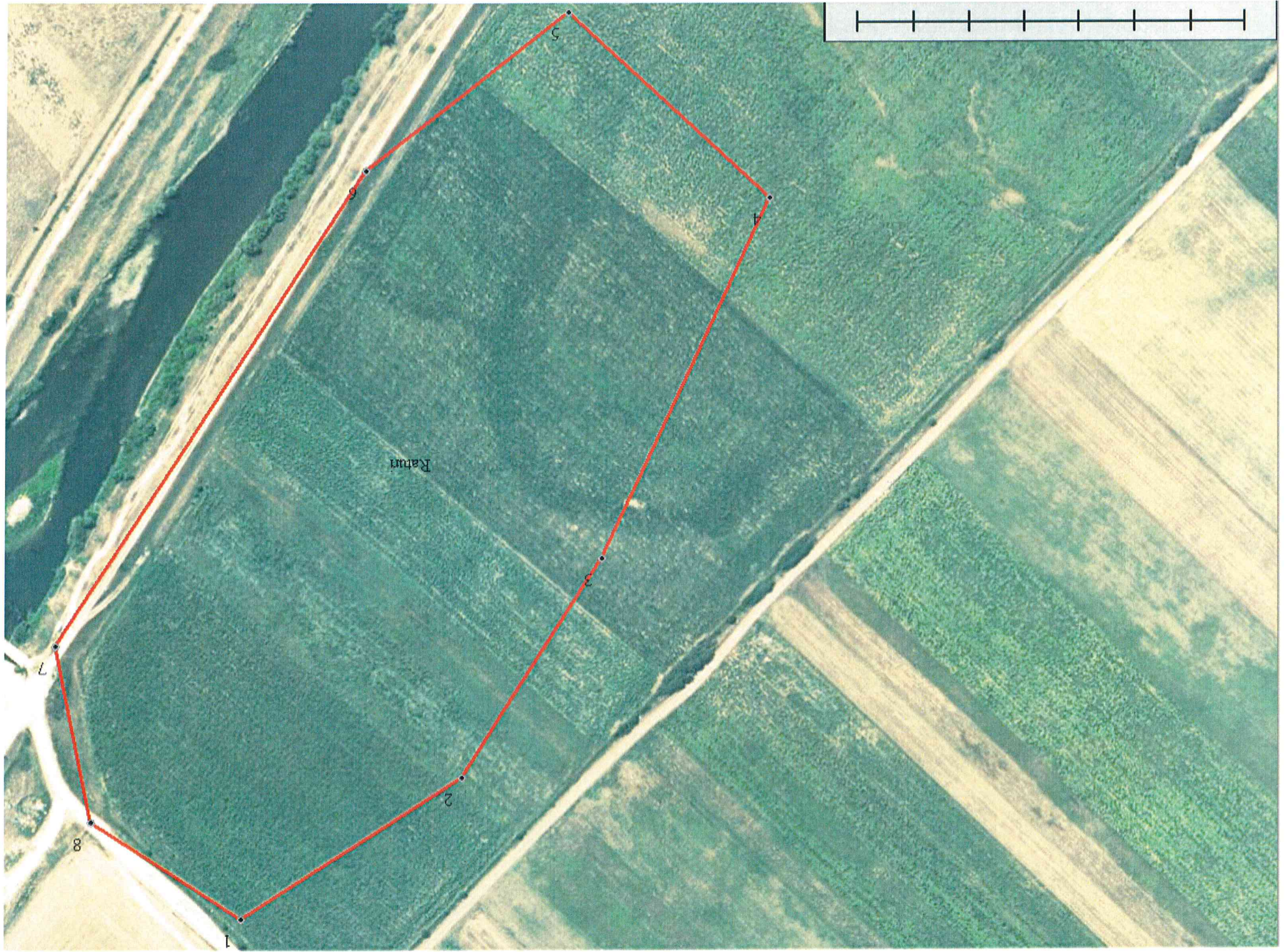
5

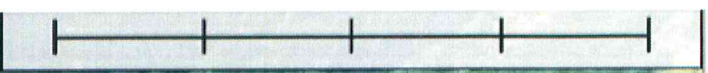
2

6

1

7





Intr podun



1

2

3

4

5

6

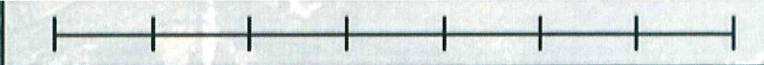
7

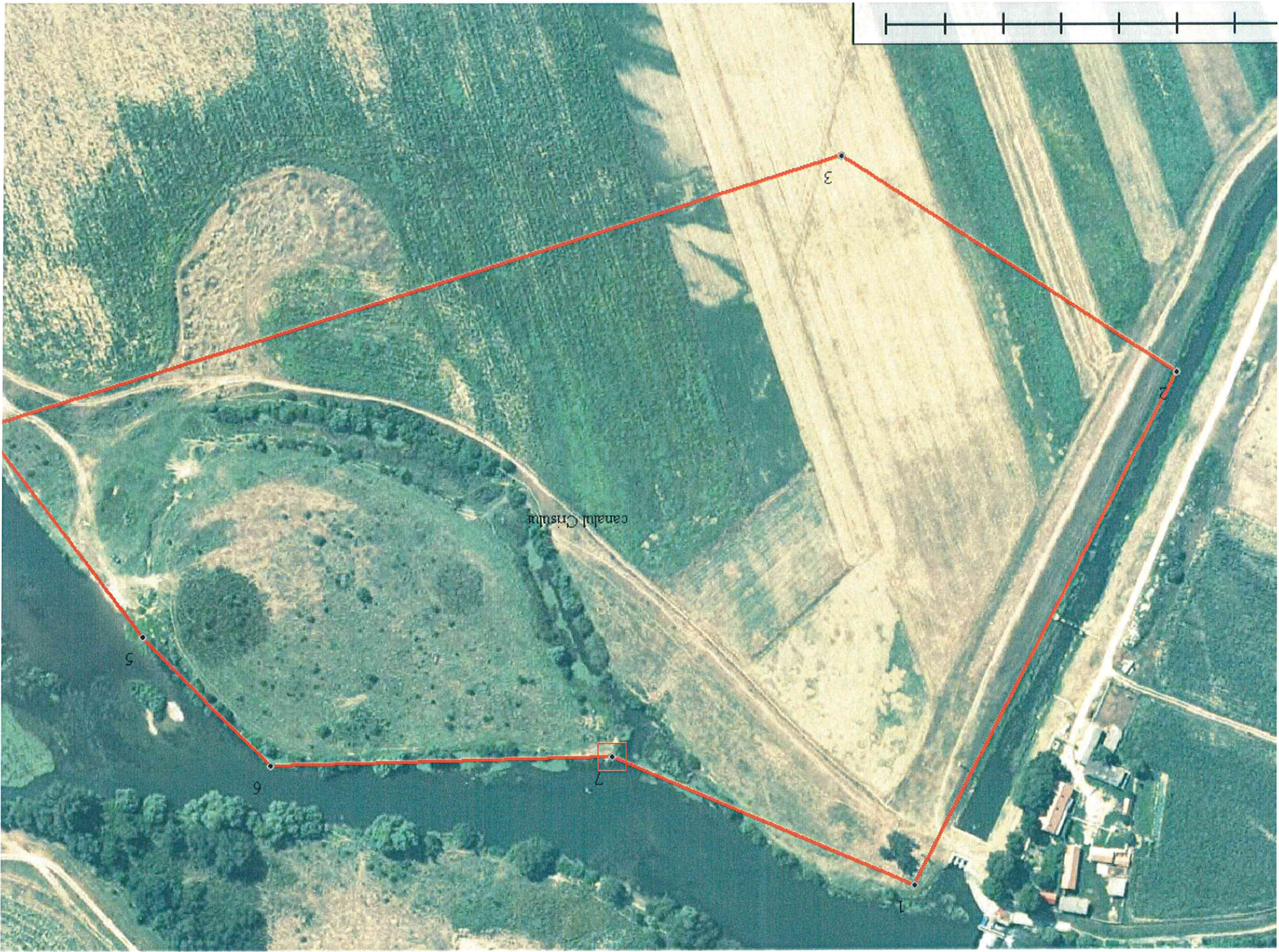
8





Pietroasa





canalul Cristina

3

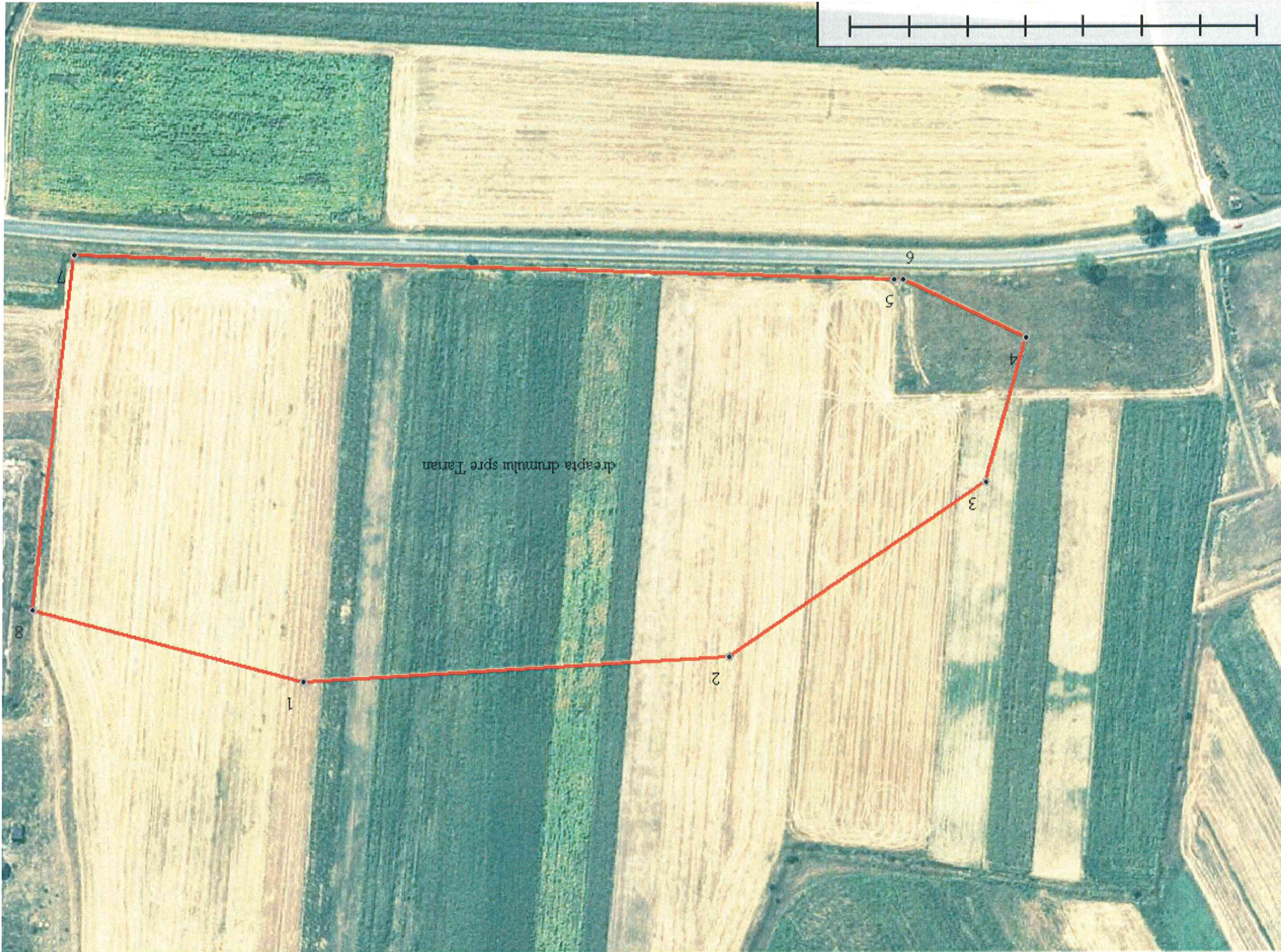
2

1

7

9

5



dreapta drumului spre Tarian



